



# Air Break Switches

Side Break and Vertical Break  
12kV, 24kV, 36kV



Insulect Air Break Switches (ABS) are designed, assembled and tested in Australia.

Our range is widely installed throughout distribution networks for isolation or switching applications.



## 12, 24, 36kV voltage rating

We have two sizes: 12/24kV and 36kV with current ratings from 630A up to 1250A.



## Vertical or side break

Each variant can be configured in a side break or vertical break arrangement.



## Horizontal or vertical install

The switches can be mounted in horizontal or vertical (pole top or mid pole) configurations.



## Local design and testing

Designed and tested in Australia in accordance with AS 62271.102 / IEC 62271.102.

## Features

### MODULAR DESIGN

We readily provide custom design changes to suit individual customer requirements, as well as modular or unitised factory assembly for more rapid installation.

### MANUAL OR MOTORISED

Available with conventional operating rod and handle, with patented hook stick actuator. Able to be fitted with motorised operation as well as remote control facilities.

### INSULATORS

Choose from Porcelain, Silicon or Cycloaliphatic insulators.

### OPTIONS

Associated earthing switch available.  
Load interrupter to break up to 630 amps.

# Technical Specifications

	Rated Voltage kV (rms)	LIWV (BIL) kVp	Power Frequency Withstand Voltage kV	Continuous Current A	Load Breaking Capacity A		Short Circuit Withstand
					Air Break Switch	Load Break Switch	
<b>Side Break</b>	12/24	150	50	Up to 1250	15	630	25 kA / 1s
	36	170	70	Up to 1250	15	630	25 kA / 1s
<b>Vertical Break</b>	12/24	150	50	Up to 1250	15	630	25 kA / 3s
	36	170	70	Up to 1250	15	630	25 kA / 3s

## Typical Configurations



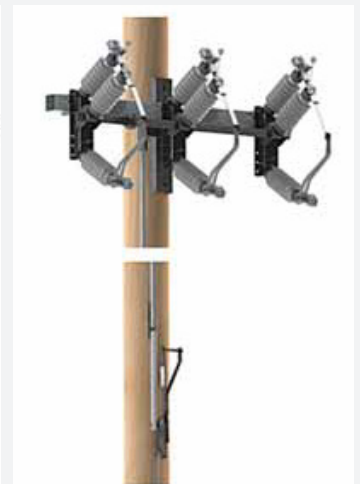
Pole Top, Side Break Switch with manual operating handle.



Pole Top, Side Break Switch with hook stick actuator.



Mid Pole, Side Break Switch with manual operating handle and associated Earth Switch.



Mid Pole, Vertical Break Switch with manual operating handle.

## Ordering Information

- Side Break or Vertical Break
- 12/24 kV or 36 kV
- Current Rating
- Pole top or mid pole designs
- Unitised or Modular
- Operating Mechanism: manual handle, hook stick actuator, motor operation (local/remote or SCADA)
- Load Break option

## Insulect Australia

**p:** 1300 446 565

**e:** sales@insulect.com

**w:** insulect.com



**DISCLAIMER:** The information in this document is believed to be correct at the time of publication. The user is responsible for determining whether the product is fit for a particular purpose and suitable for user's method of use or application. No reliance may be placed on any such information or data without first contacting Insulect Australia to clarify individual user requirements.