

Reach compliance with AS / NZS 61439 series

Switchboard Manufacturers & Designers partner with Insulect

What is AS/NZS 61439?

AS/NZS 61439 is the new series of standards for low voltage switchgear and is an adoption of IEC 61439 series with AS/NZS modifications.

It was introduced in May 2016 with a five year transitional period to replace AS/NZS3439:2002 series in 2021.

What does this mean for switchboard builders?

Switchboard builders are responsible for compliance of their completed assemblies, based on the original manufacturers verified design. The new standard brings a raft of changes and some key points to consider are:

Verification Methods

AS/NZS 61439.1 specifies three methods for verification, replacing TTA and PTTA; verification by testing, comparison with a tested design, or assessment.

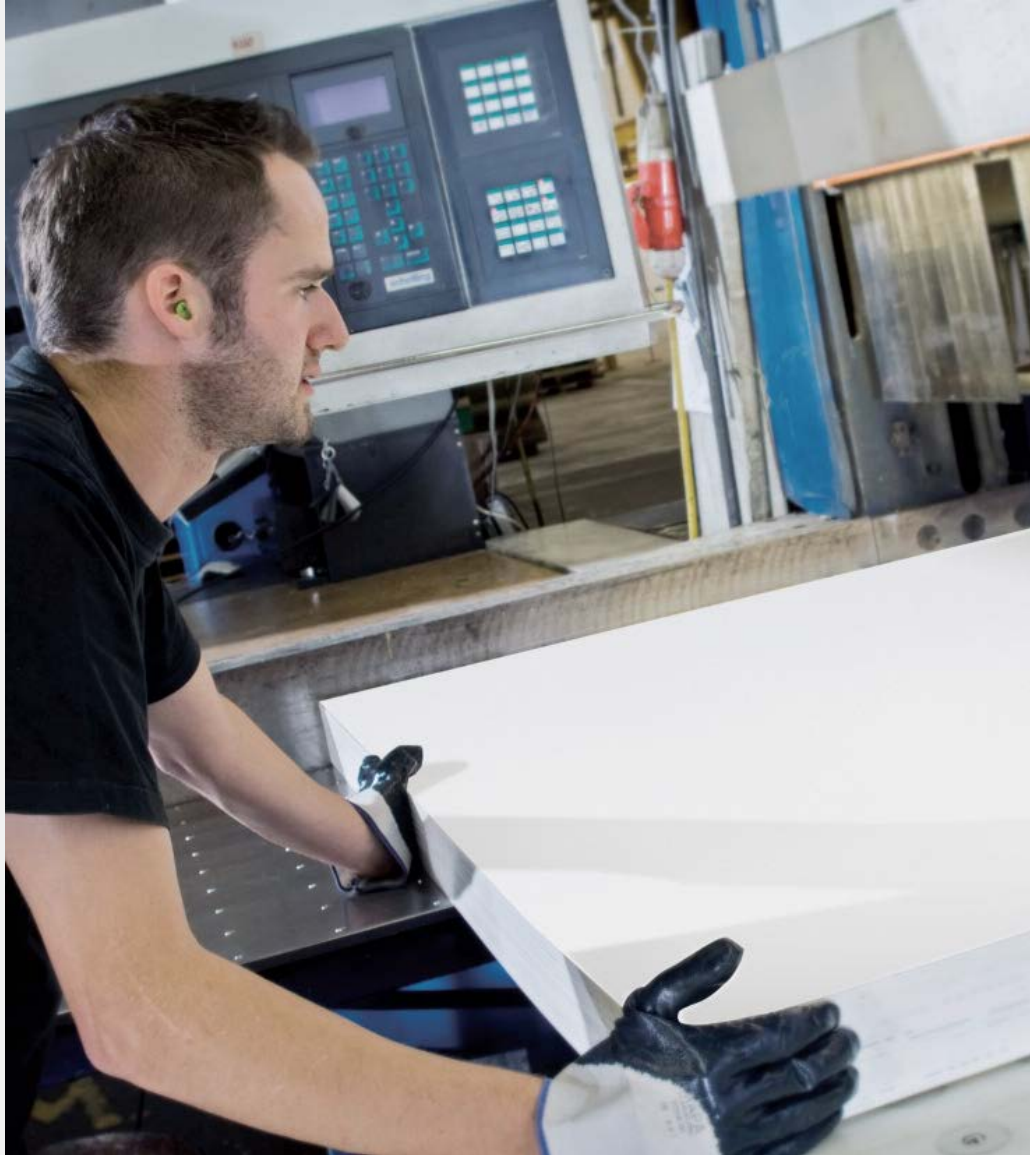
Verification Methods

- Verification by testing – this involves conducting type-tests proving the design fulfils the requirements of the standard.
- Verification by comparison with reference design – this is permissible only for temperature rise and short circuit verification by comparison with a type-tested design.
- Verification by assessment – this is permissible in some cases e.g. for temperature rise by calculation up to 630A and 1600A, form of internal separation, reference to manufacturers data in relation to incorporation of switching devices, electrical connections, terminals, resistance to abnormal heat and fire and UV radiation of insulating materials etc.

Glow-Wire Test Approved

AS/NZS 61439 verification requirements include tests for resistance to normal heat and fire of insulating materials due to internal electric effects. As such materials used to support current carrying parts i.e. busbar insulators, must be verified by a 960°C Glow-Wire test to Clause 4 of IEC60695-2-11:2000. This certification ensures materials do not sustain burning and self extinguish.





Conformance requirements and the Insulect solution

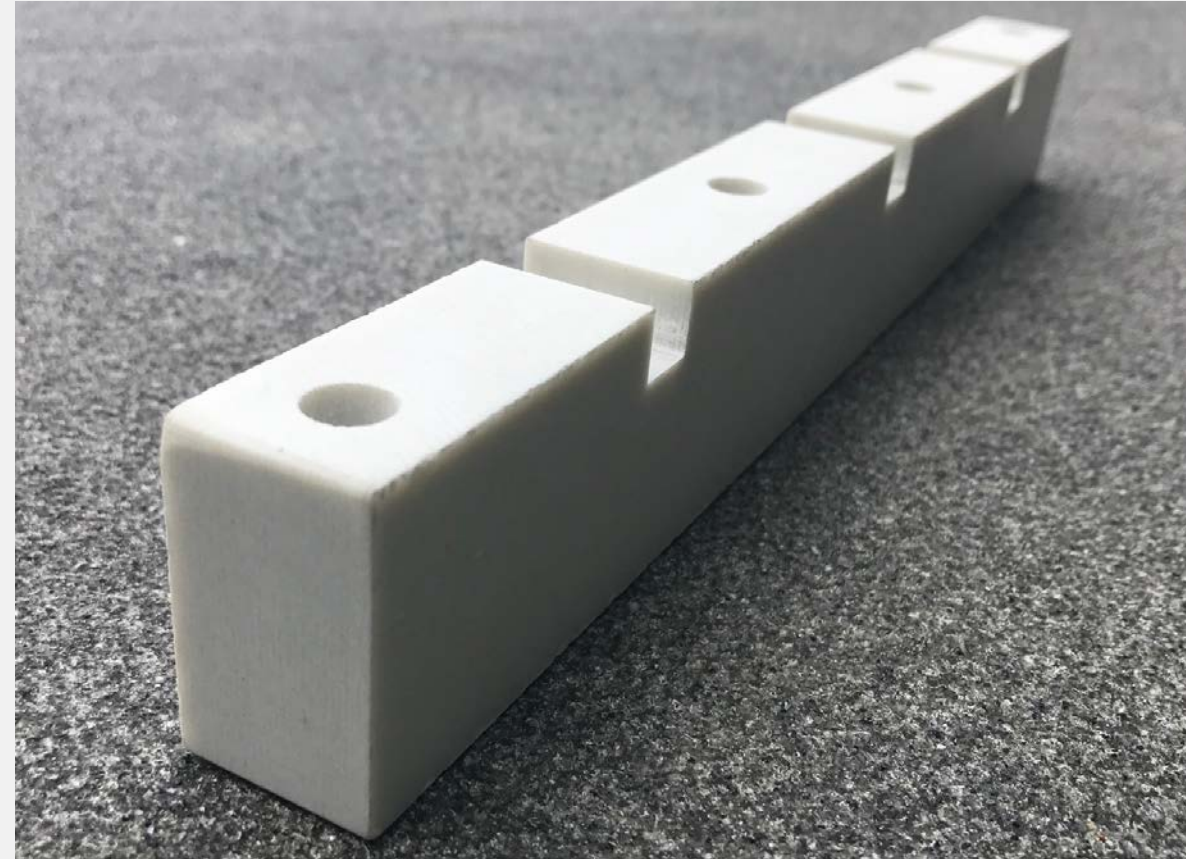
By partnering with Röchling, Insulect have developed a product which complies electrically and mechanically with the requirements of material and parts to Clause 10.2 of AS/NZS 61439.1

This material has been named UPM S1.

UPM S1 for Switchboard

- Outstanding mechanical performance characteristics
- Electrically compliant
- Locally made components
- Used by major switchboard manufacturers in Australia
- Complies with the new AS/NZS standard for LV SCAs

Click here for more details [UPM S1](#)



Need help to tackle the change out?

Insulect have the pleasure of working with over a hundred Switchboard Builders, right across Australia and New Zealand to ensure compliance with the new standard AS/NZS 61439 series. We're here for you too.



1300 446 565

sales@insulect.com